

# Kids Classic T-Shirt Specifications



An indispensable t-shirt in our classic silhouette-

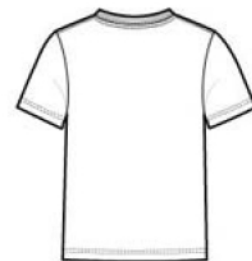
- 5.4-ounce, 100% cotton
- 98/2 cotton/poly (Ash)
- 90/10 cotton/poly (Athletic Heather)
- 50/50 cotton/poly (Neon Blue, Neon Green, Neon Orange, Neon Pink, Neon Yellow, Dark Heather Grey, Heather Navy, Heather Purple, Heather Red, Heather Royal)

## CARE INSTRUCTIONS

Machine wash cold, inside out with like colors. Only non-chlorine bleach when needed. Tumble dry medium, medium/hot iron. Do not iron decoration.

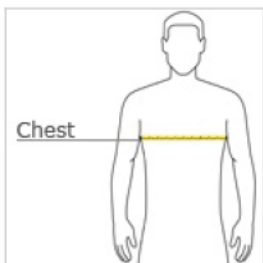


front



back

## HOW TO MEASURE



### CHEST

With arms down at sides, measure around the upper body, under arms and over the fullest part of the chest.

## SIZE CHART

	XS	S	M	L	XL
Size	4	6/8	10/12	14/16	18/20
Chest	25-26	26-28	28-30	30-32	32-35

## PRODUCT MEASUREMENTS

	XS	S	M	L	XL
Chest	14	16	17	18	19
Sleeve Length from Center Back	11 3/4	13 3/4	14 3/4	15 3/4	16 3/4
Body Length at Back	18	20	22	24	26

### CHEST

Measured across the chest one inch below armhole when laid flat.

### SLEEVE LENGTH FROM CENTER BACK

Measure From CB Neck to Shoulder Point to Finished Sleeve Hem.

### BODY LENGTH AT BACK

Measured from high point shoulder to finished hem at back.